



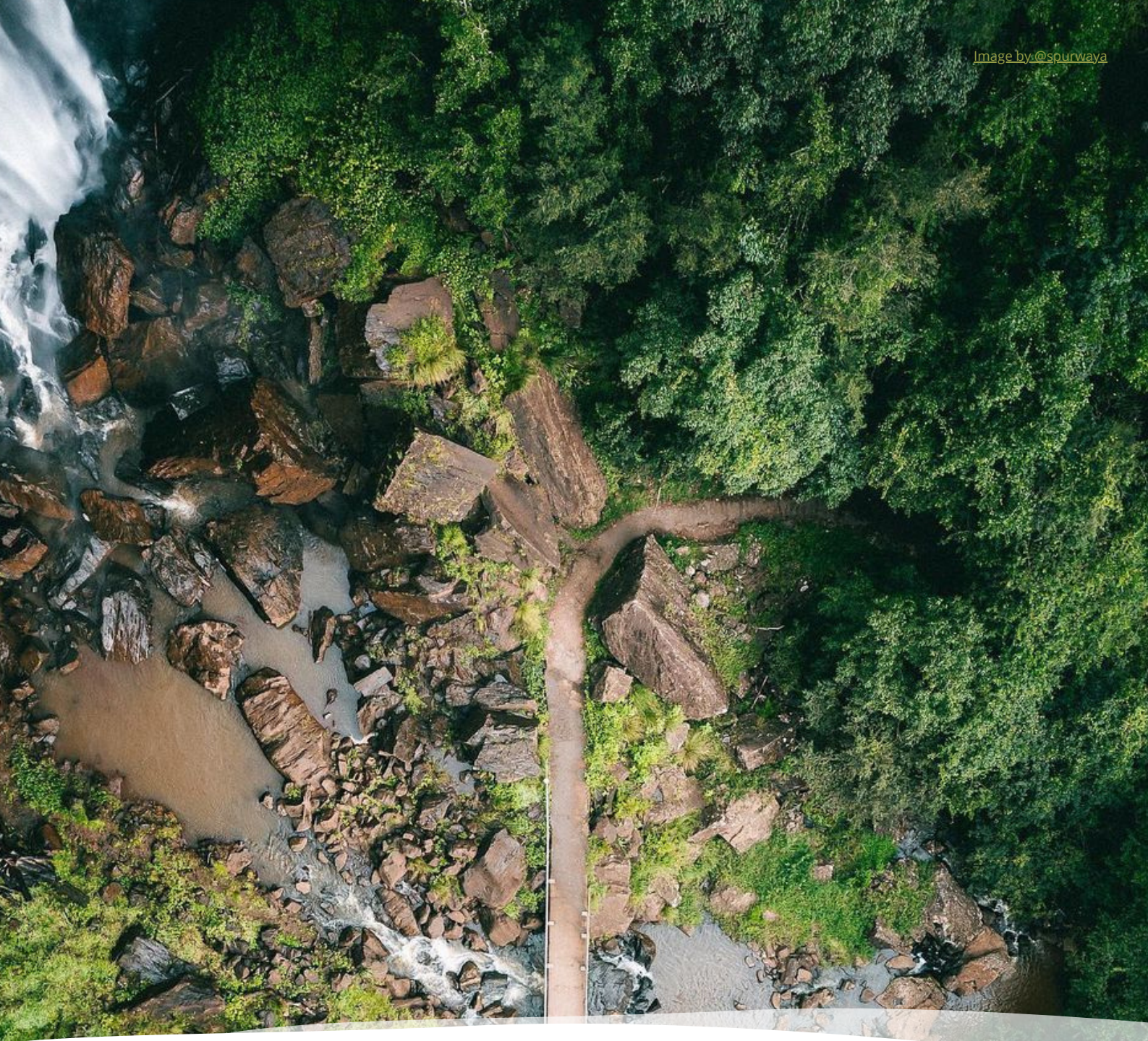
# QLD'S *Wild* COUNTRY



Southern Downs  
REGIONAL COUNCIL



Southern  
Downs &  
Granite Belt



## *So wild in the Southern Downs...*

Put the wild back into your life in Queensland's Southern Downs, a region with breathtaking rugged mountains, exhilarating experiences, and sweeping views across pristine Gondwana Rainforest filled valleys, all just 90 minutes from Brisbane.

Granite boulders and towering outcrops invite exploration and trails lead you into a spectacular wilderness filled with unlimited possibilities that implore you to lace up your boots and head outdoors. Lush, riverine gorges offer perfect opportunities for connecting with unique wildlife, hugging ancient trees, and having the adventures you've always dreamed about.

Wildflowers splash colour across the landscape. Glittering waterfalls cascade out of the forest. Refresh your spirit and soak up the untamed beauty. A journey of discovery is at your fingertips when you escape from the everyday and step out into Queensland's wild country.



Toowoomba •  
**WARWICK** •  
STANTHORPE

- Sunshine Coast
- Brisbane
- Gold Coast



An aerial photograph of a large, calm lake at sunset. The water is dark with gentle ripples. In the distance, two kayakers are on the water. The shoreline is lined with dense green trees and grass. In the foreground, a small campsite with a tent and a silver SUV is visible on a grassy bank. The sky is a soft, warm orange and yellow, indicating the setting sun.

# *Choose your wild*

Use this guide to explore the wild side of the Southern Downs.

4 BOATING & FISHING

5 MOUNTAIN BIKING

6 4WD & MOTOCROSS

7 WALKING TRAILS & HIKES

9 CAMPING & CARAVANNING

10 WILD COUNTRY LIFESTYLE

11 ICONIC NATIVE WILDLIFE

12 FIND YOUR NEXT ADVENTURE

# Boating & Fishing

The Southern Downs is a popular destination for boating, fishing and other recreational water sports. Explore the mighty Condamine River and the region's scenic dams. There is a fantastic day on the water waiting around every corner.

[Image by @spurwaya](#)

## Glenlyon Dam

96km south-west of Stanthorpe.

Ideal for: Wildlife viewing, kayaking, skiing, sailing and fishing

Facilities include: Toilets, picnic tables, BBQs and playground with boat hire and on-site camping at Glenlyon Dam Tourist Park.

## Leslie Dam

Located 13km west of Warwick.

Ideal for: A variety of power boating and oar powered water sports, including fishing for yellowbelly, silver perch and Murray cod.

Facilities include: Boat ramp, picnic area with toilets and viewing access to the dam wall, on-site camping at Washpool Reserve or Lake Leslie Tourist Park. Boat hire and fuel available.

\*Any angler aged 18+ requires a fishing permit to fish in dams and weirs in Queensland.

## Severn River

Sundown National Park is located 15km south of Stanthorpe and offers the best access to the Severn River.

Ideal for: Spinning lures and casting a line from the banks.

## Connolly Dam

15km south-east of Warwick.

Ideal for: Chasing the mighty Murray cod or monster golden perch and viewing wildlife from your electric or oar powered vessel.

Facilities include: Toilets and on-site camping at Connolly Dam Campground

## Storm King Dam

11km south-east of Stanthorpe.

Ideal for: Summer picnics, water skiing, kayaking and fishing for yellowbelly and silver perch.

Facilities include: Boat ramp, toilets, BBQs, picnic tables and playground, with canoe hire and on-site camping at Sommerville Valley Tourist Park.

## Condamine River

The headwaters of the mighty Condamine River originate in Killarney before dropping 40m from Queen Mary Falls and meandering through Warwick, Pratten and Leyburn enroute to South Australia.

Ideal for: Casting a line at Queens Park or doing the Warwick Paddle Trail from Queens Park Weir to SCOTS Weir and beyond.

# Mountain Biking

See the Southern Downs from a different perspective when you follow winding trails through shady forests, cross monolithic granite platforms, roll through magnificent gorges, or cruise along the country roads. The crisp country air provides idyllic cycling conditions. There are many trails suited to families, as well as black diamond tracks for more experienced riders.



## **Mount Marlay MTB Trail network**

Located only 1.5km from the Stanthorpe CBD this newly opened network offers five wild granite trails of fun for beginners, families and experienced riders.

## **Beat you to Ballandean**

Enjoy 34kms of quiet country roads that connect dozens of cellar doors and foodie stops between the Stanthorpe CBD and Ballandean.

No bike? Hire one from Granite Belt Bicycle Tours & Hire.

## **Ride in the wild**

Take on the sand-based fire trails in either Passchendaele or Broadwater State Forest near Stanthorpe.

Crush the Peak Trail or Creek Trail at Girraween National Park.

In Killarney, get your wheels wet when you cross the Condamine River 14 times as you ride the public road through Cambanoora Gorge.

# Four Wheel Driving & Motocross

You'll find some of the region's best four wheel driving in remote Sundown National Park south-west of Stanthorpe, plus there's plenty of wild adventures to choose from at a number of well-maintained private properties and National Parks.

Image by @trippin\_defender

## **Best for four wheel driving**

### **Emu Creek Road**

East of Warwick

### **Sundown National Park**

Stanthorpe

### **The Springs 4×4 Adventure Park**

Warwick

### **Janowen Hills 4×4 Park**

Goomburra

### **Gordon Country**

Goomburra

## **Best for Motocross**

### **Gap Creek Moto**

Tregony (10km west of Cunninghams Gap)

### **Glendon Motor X**

Glendon Camping Ground, Thane

### **Warwick & District Dirt Bike Club**

Morgan Park, Warwick

### **Glendon Camping Grounds**

Thane

# Walking Trails & Hikes

Bushwalking is one of Queensland's great pastimes and the Southern Downs is the perfect place to lace up those boots and take a walk on the wild side. From serious granite-scaling hikes to leisurely family bushwalks in areas of outstanding natural beauty, there is a track to suit everyone.

[Image by @kyle\\_hunter](#)

## Best for exploring the Granite Belt...

### Mt Marlay Lookout

Location: Alice Street, Stanthorpe

Tracks: 500m return concrete stairway to the lookout

Wild tip: Panoramic views of Stanthorpe. Also accessible by car

### Donnelly's Castle

Location: Donnelly's Castle Road, Pozieres

Tracks: 200m walk to the top

Wild tip: Ideal for families and children

### Girraween National Park

Location: Pyramids Road, Ballandean

Tracks: Multiple between 560m and 5.2km

Wild tip: Take a selfie at Granite Arch or climb The Pyramid

### Sentimental Rocks

Location: Jardine Street, Stanthorpe

Tracks: Easy walking

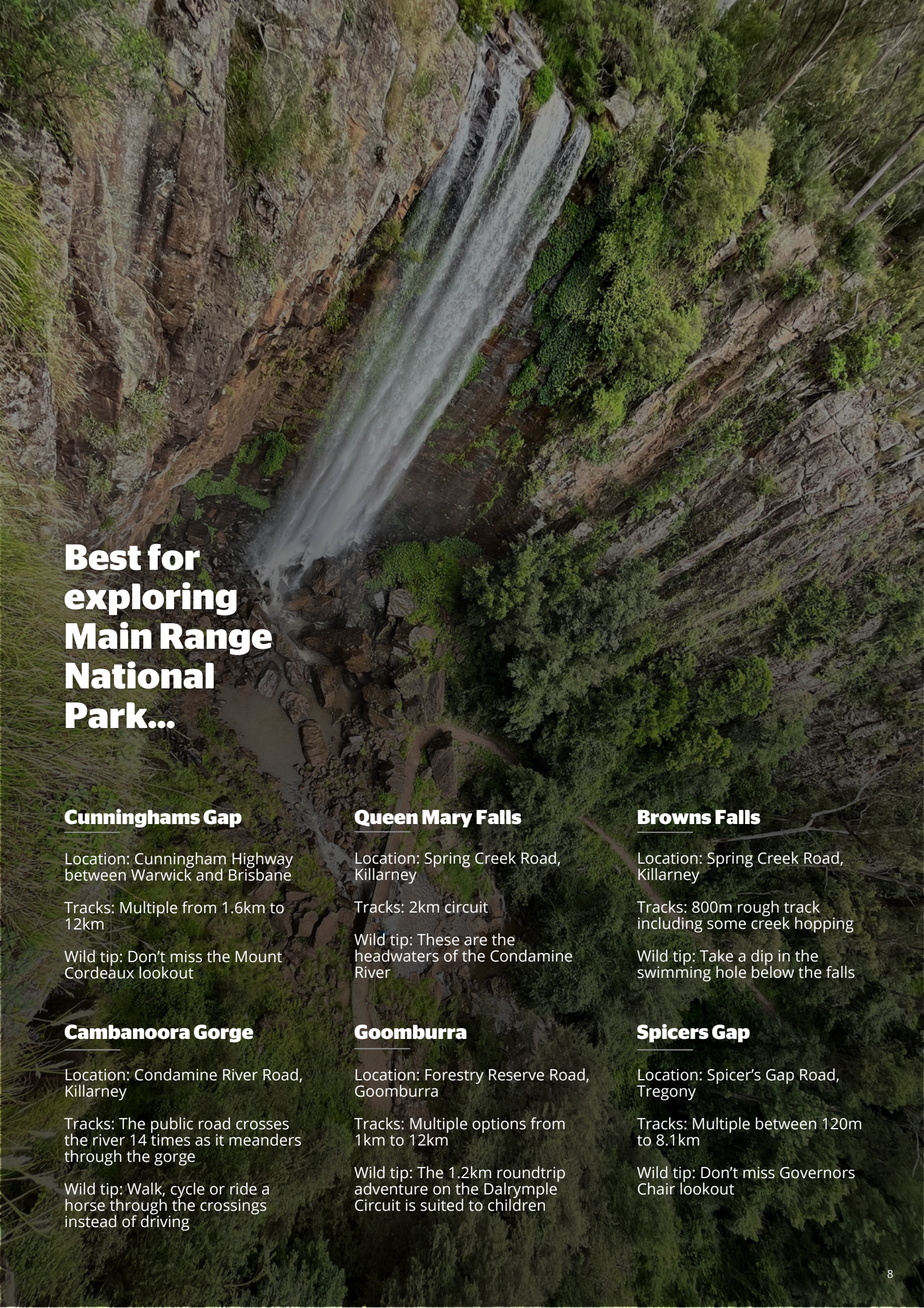
Wild tip: Pet friendly!

### Sundown National Park

Location: Sundown Road, Ballandean

Tracks: Five trails between 2km to 24km

Wild tip: Don't miss Red Rock Gorge lookout



## Best for exploring Main Range National Park...

### **Cunninghams Gap**

Location: Cunningham Highway between Warwick and Brisbane

Tracks: Multiple from 1.6km to 12km

Wild tip: Don't miss the Mount Cordeaux lookout

### **Cambanoora Gorge**

Location: Condamine River Road, Killarney

Tracks: The public road crosses the river 14 times as it meanders through the gorge

Wild tip: Walk, cycle or ride a horse through the crossings instead of driving

### **Queen Mary Falls**

Location: Spring Creek Road, Killarney

Tracks: 2km circuit

Wild tip: These are the headwaters of the Condamine River

### **Goomburra**

Location: Forestry Reserve Road, Goomburra

Tracks: Multiple options from 1km to 12km

Wild tip: The 1.2km roundtrip adventure on the Dalrymple Circuit is suited to children

### **Browns Falls**

Location: Spring Creek Road, Killarney

Tracks: 800m rough track including some creek hopping

Wild tip: Take a dip in the swimming hole below the falls

### **Spicers Gap**

Location: Spicer's Gap Road, Tregony

Tracks: Multiple between 120m to 8.1km

Wild tip: Don't miss Governors Chair lookout

# Camping & Caravanning

How wild is your wild? Whether you prefer a tent, a cabin or a caravan you can take your pick when visiting the Southern Downs. Get off the grid, bring the dog and enjoy our wild open spaces.

## Popular Bush Camping Sites



Gordon Country, Goomburra  
Foxbar Falls, Amiens  
Goomburra Valley Campground, Goomburra  
Wynola Country Cousins Camping, Killarney

## Fishing / Canoeing Campsites

Washpool Reserve Leslie Dam, Warwick  
Lake Leslie Tourist Park, Warwick  
Connolly Dam, Warwick  
Sommerville Valley Tourist Park, Stanthorpe  
Glenlyon Dam Tourist Park, Stanthorpe

## Farmstyle Camping for Families

Bestbrook Mountain Resort, Tregony  
Queen Mary Falls Caravan Park, Killarney  
Cherrabah Resort, Elbow Valley

## Campgrounds for Four Wheel Driving

Gordon Country, Goomburra  
Janowen Hills, Goomburra  
Springs 4x4 Adventure Park, The Glen  
Glendon Campgrounds, Karara  
Sundown National Park, Sundown  
Motocross available at Gap Creek Farm Stay, Tregony

## CBD-Based Campgrounds

Top of the Town Tourist Park, Stanthorpe  
Stanthorpe Showgrounds, Stanthorpe  
Warwick Freedom Lifestyle Park, Warwick  
Rose City Caravan Park, Warwick  
DJ's Caravan Park, Warwick  
Killarney Sundown Motel and Caravan Park, Killarney  
Killarney View Cabins and Caravan Park, Killarney  
**National Parks**  
Main Range National Park - Goomburra or Spicers Gap sections  
Sundown National Park - multiple locations  
Girraween National Park - multiple locations

# *It's a wild country lifestyle*

Have you ever marvelled at fireflies, hand-fed wild parrots or milked a cow? Country life brings with it stacks of opportunities to get up close and personal with some of the wilder Southern Downs residents. Bring the family for a weekend and weave a magical animal experience into your stay.

Image by @boho.daisy

## **Meet the locals**

### **Bestbrook Farmstay**

Location: Tregony  
Ideal for: Animal feeding, horse riding, whip cracking, cow milking and butter making

### **Granite Belt Christmas Farm**

Location: Aerodrome Road, Applethorpe  
Ideal for: Visiting Santa's animals and drinking hot chocolate all year round

### **Cherrabah Resort**

Location: Keoghs Road, Elbow Valley  
Ideal for: Pony rides & animal nursery

## **Admire the wildlife**

Queen Mary Falls Caravan Park and Cabins

Location: Spring Creek Road, Killarney

Ideal for: Hand-feeding king parrots and crimson rosellas and, in November see fireflies emerge around the walking track at dusk

## **Visit our wild neighbours**

Darling Downs Zoo

Location: Between Warwick and Toowoomba

Ideal for: Visiting rare species, including the only white lions in Queensland

# Iconic Nature Wildlife

Fill up your ultimate Australian fauna and flora bucket list as you explore the Southern Downs and come face-to-face with the rare and iconic wildlife that call Queensland's wild country their home.

## **Leyburn jewel butterfly**

Occurring only in extremely limited bullock woodlands habitat near Leyburn, the Leyburn jewel butterfly (*Hypochrysops piceatus*) is considered the "rarest butterfly in Australia" and is best spotted during late summer-autumn afternoons.

## **Coxen's fig parrot**

Spot eastern bristlebird, Coxen's fig parrot and giant barred frog along the Dalrymple circuit

## **Iconic birdlife**

See king parrots, crimson rosellas and bower birds at Queen Mary Falls

## **Black grevillia**

Join the Stanthorpe Rare Wildflower Consortium for a wildflower walk to spot this rare flower found only on the Stanthorpe Plateau

## **Dalveen blue box**

With only an estimated 340 trees remaining the Dalveen blue box (*Eucalyptus dalveinica*) is critically endangered

## **The Moss Gardens**

Walk along the 100-year old moss and lichen covered rabbit proof fence to view ancient Hoop Pine, Kurrajong and Silky Oak

## **Southern spotted-tailed quoll**

Keep an eye out for an iconic and endangered Southern Downs resident in our National Parks and Reserves

## **Allora Mountain Flora and Fauna Reserve**

Spot koalas, nesting wedge-tail eagles, wallabies and over 120 species of birds in the 210 hectare reserve that occupies a spectacular flat-topped mesa, with well-defined paths and a picnic area.

## **Platypus & lyrebirds**

Spot these rare and endangered species on your gentle journey through Cambanoora Gorge

# FIND YOUR NEXT ADVENTURE

Download our Visitor App. It's the ultimate free travel resource for our region that helps you explore even more!

*Download the App*

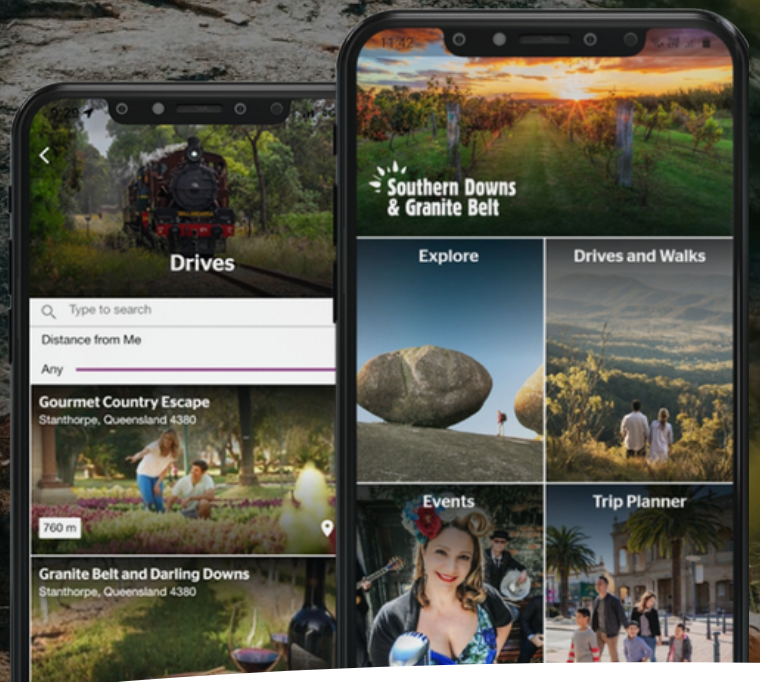
As you plan your trip with this app, take photos along the way and use #seeSouthernDowns



Download on the App Store



Get it on Google Play





See you in  
**QLD'S *Wild* COUNTRY**

